

Annual Listing of Obligated Projects

Mercer County, PA



Shenango Valley Area Transportation Study
Metropolitan Planning Organization

2022

Purpose

This annual listing of Mercer County, Pennsylvania's obligated projects is a requirement of federal transportation legislation. In November of 2021, the United States Government passed the Infrastructure Investment and Jobs Act (IIJA), replacing the Fixing America's Surface Transportation Act (FAST Act) which existed throughout most of calendar-year 2021 and for several years prior. Regardless of the act, the requirement is the same: Metropolitan Planning Organizations (MPOs) must publish a list of all projects for which federal funds have been obligated during the previous year. This report satisfies this requirement, listing the federally-funded transportation projects in Mercer County that were obligated in federal fiscal year (FFY) 2022, which began on October 1, 2021 and ended September 30, 2022.

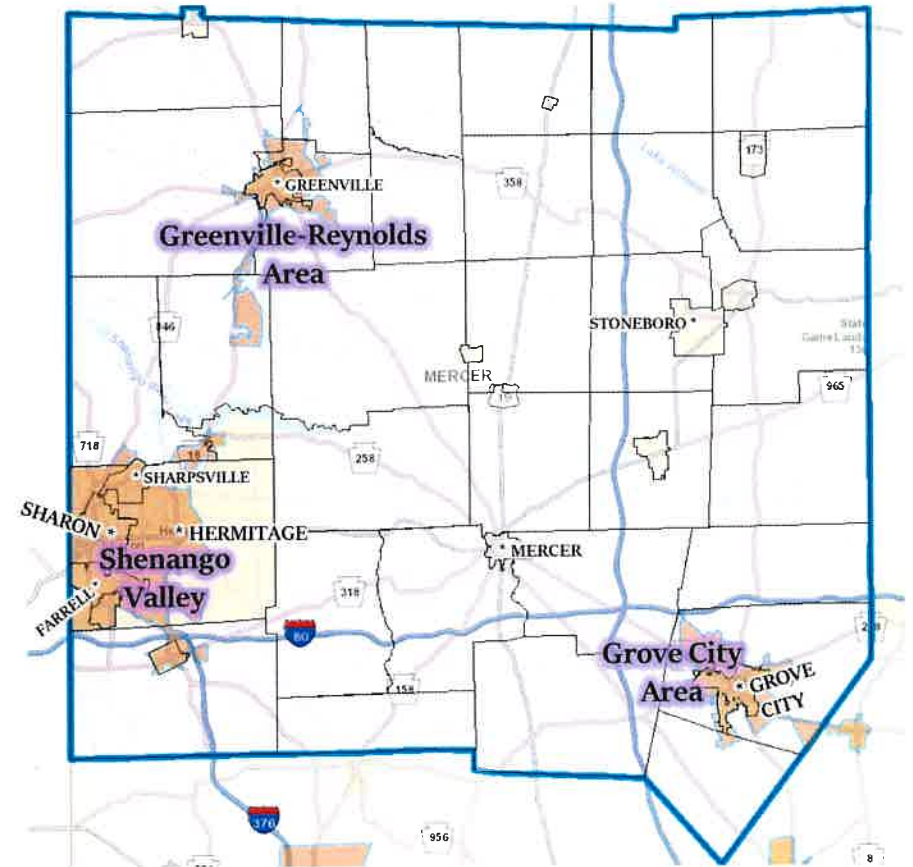
The Federal Highway Administration (FHWA) defines obligation as the federal government's legal commitment to pay or reimburse states or other entities for the federal share of a project's eligible costs. Thus, an obligated project is one that has been approved by the federal government for reimbursement, though not necessarily reimbursed yet.



Also, not all obligated projects were initiated or completed during the previous year, and the obligated project cost listed in this report does not always equal the total, final project cost.

Regional Context and Transportation Network





The 48 municipalities comprising Mercer County, in total, contain just over 110,000 people according to the 2020 U.S. Census. The majority of the county's municipalities are rural in character and contain fewer



than 2,000 people. The two most populous municipalities—the Cities of Hermitage and Sharon—are both part of the Shenango Valley Region along the western edge of the county, which accounts for about 40% of the total county population. The Grove City and Greenville-Reynolds areas are the other dominant regional centers of Mercer County. These are located in the southeast and northwest areas of the county, respectively.

The transportation network consists of three Interstate Highways, 17 two-or-three digit state or U.S. routes, and dozens of four-digit state routes. Together, this network is maintained by PennDOT and consists of nearly 740 lane miles, or over 36% of the overall roadway network.

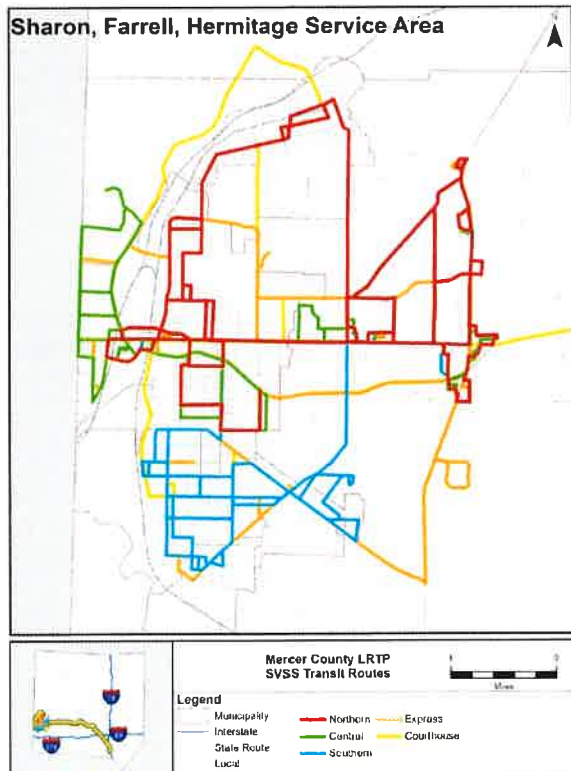
Along these roadways are hundreds of bridges ranging from small culverts to large viaducts, sidewalks, bike lanes, traffic signals, and other assets. PennDOT and the SVATS MPO are responsible for any federal funds utilized within this network (and, on occasion when applicable, off-network).

PennDOT-Maintained Road Network	
Roadway Type	Examples in Mercer County
Interstate Highway	
Two-or-Three-Digit U.S. Route	
Two-or-Three-Digit State Route	
Four-Digit State Route	

The transit system in Mercer County consists of two systems: the Shenango Valley Shuttle Service (SVSS) and the Mercer County Community Transit (MCCT). The SVSS is a fixed-route service which runs five routes, mostly throughout the Shenango Valley, which is the most urbanized/populated area of Mercer County. The MCCT service runs throughout Mercer County and is an on-demand service. These smaller vehicles run citizens door-to-door, and appointments must be scheduled in advance.

The transit system in Mercer County consists of two systems: the Shenango Valley Shuttle Service (SVSS) and the Mercer County Community Transit (MCCT).

The SVSS is a fixed-route service which runs five routes, mostly throughout the Shenango Valley, which is the most urbanized/populated area of Mercer County. The MCCT service runs throughout Mercer County and is an on-demand service. These smaller vehicles run citizens door-to-door, and appointments must be scheduled in advance.



About the SVATS MPO

The Shenango Valley Area Transportation Study (SVATS) MPO is Mercer County's federally mandated organization responsible for transportation related issues and the planning/programming of federal transportation funds. Despite the official name referring to the Shenango Valley region specifically, the MPO carries this responsibility for the entirety of Mercer County.

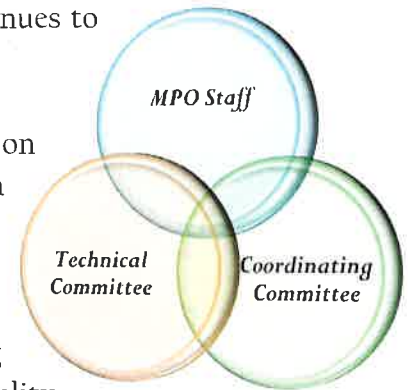


Professional staff members of the Mercer County Regional Planning Commission (MCRPC) run the daily business of the MPO. PennDOT District 1-0 and Central Office staffs work with the MCRPC staff on a near-daily basis and are intimately involved with the programming of funds and the implementation of projects. In addition to working with PennDOT, MPO staff works closely and collaboratively with Mercer County's municipal officials, the general public, modal operators, other regional MPOs and RPOs (Rural Planning Organizations), and various other transportation stakeholders.

Two committees direct the work that the aforementioned staff accomplishes. The larger of the two committees is the Coordinating Committee. This group is responsible for ensuring the maintenance of planning eligibility for state and federal grants and the maintenance of both the Long-Range Transportation Plan (LRTP) and the more short-

range Transportation Improvement Program (TIP). This committee meets on a quarterly basis (additional meetings are occasionally held, if needed) to vote on any action items that come before the MPO and to discuss transportation-related issues in Mercer County. The Coordinating Committee has 25 members, the maximum currently allowed according to our MPO's Bylaws. Most members are municipal-based, though the county, the county's transit provider, and PennDOT district and central office staffs have membership as well. The SVATS MPO continues to promote equal representation throughout the County.

The other MPO committee is the Technical Advisory Committee (TAC), which has the duty to study and report on technical aspects as directed by the Coordinating Committee and to initiate studies and recommendations on technical aspects in pursuance of the objectives of the MPO's work program. This committee meets on an as-needed basis. Some years, the TAC may meet three or four times, but other years it may only meet once or not at all.



Both of these committees, as well as steering committees set up for particular planning studies, work closely with MPO staff and PennDOT D-1 to move projects from ideas into reality.

As these ideas advance, significant consideration is given to safety, community character, efficiency of the system, and how an improvement might best serve various modes as applicable (vehicular traffic, public transit, freight needs, bicyclists, pedestrians, etc.). An increasing level of analysis goes into determining a project's worth based on performance measures (both

the existing performance and its ability to improve performance) and the effects on traditionally-underserved populations. This ideally reflects a program of projects that is not only equitable but allows our region's limited dollars to go further.



How to Read This Report

The charts on the following pages show each federally-obligated transportation project in Mercer County during federal fiscal year 2022. Two separate reports are included: (1.) Highway and Bridge and (2.) Public Transit. Each project within the appropriate report is listed on its own row; the columns describe numerous attributes of each project. The column headings represent the following:

MPMS/PROJECT #	Project Identification # in the Multimodal Project Management System (MPMS)
PROJECT TITLE	Name of the project in MPMS
PROJECT DESCRIPTION	Defines project scope of work and location
PROJECT ADMINISTRATOR	Defines project ownership
PHASE	Defines phase of project (see project phase information listing below)
STATE ROUTE	State Route number for the project
OBLIGATION AMOUNT	Federal funds obligated during the time period of the report
PROGRAM TOTAL	Total dollars programmed for the project during the 4-year TIP*
FEDERAL FUNDS REMAINING	Total amount of federal funds remaining in the project

*- TIP is the Transportation Improvement Program, or the 4-year listing of programmed projects



Funding Codes and Project Phase Information

Bridge Off—Bridge off the Federal Aid System (locally owned)

Enhancements—Transportation Alternatives Set-Aside Program

NHPP—National Highway Performance Program

Safety Highway—Safety Improvement Program

STP—Surface Transportation Program

STU—Surface Transportation Program-Urban Program

Project Phase—Project Phase Description

CON—Construction

FD—Final Design

PE—Preliminary Engineering

ROW—Right of Way

STUDY—Study

UTL—Utility



**2022 FHWA Obligation Report
Obligations 10/1/21 to 9/30/22**

* Negative amounts in the obligation column are a result of de-obligating unused funds for a project. De-obligation is a release of funds due to either the cancelation or completion of a project

MPMS	PROJECT TITLE	PROJECT DESCRIPTION	PROJECT ADMINISTRATOR	PHASE	STATE ROUTE	OBLIGATION* FFY 2022	PROG. TOTAL FFY 2021 TO 2024	FED FUNDS REMAINING
110126	Mercer 2022 RPM	This project includes installing, repairing and replacing reflective pavement markers on various state routes and in various municipalities in Mercer County in 2022.	PENNDOT	Construction		\$73,905	\$73,905	\$0
1671	Kelly Rd Brs T-388 (Dual)	This project includes the replacement of the Kelly Road (Township Road 388) Bridges over the Shenango River in the City of Hermitage. Work involves two separate single lane structures. These local bridges are 343 feet in length and are owned by Mercer County. The proposed Kelly Road Bridge (T-388) project is located in the Borough of Sharpville and the City of Hermitage in Mercer County. The project consists of replacing two existing adjacent bridges with one structure. The first structure is a Parker Thru Truss bridge that is closed to all traffic, including pedestrian. The second structure is a two-span steel beam bridge. In order to construct the new structure, the proposed action involves: constructing a causeway downstream of the existing bridges; installing temporary towers under the existing single-span truss bridge; cutting and removing end sections of the truss bridge (for preservation); demolishing the remainder of the truss bridge; removing the downstream causeway; constructing and maintaining a temporary bridge; constructing a causeway upstream of the existing bridges; demolishing the existing two-span steel beam bridge; demolishing the existing abutments and pier; constructing new abutments and a pier (in a similar location); constructing one new 2-span bridge in the same location and configuration as the two-span bridge; removing the upstream causeway; and removing the temporary bridge.	MERCER COUNTY	Utility		\$8,000	\$0	\$(8,000)
1671	Kelly Rd Brs T-388 (Dual)	This project includes the replacement of the Kelly Road (Township Road 388) Bridges over the Shenango River in the City of Hermitage. Work involves two separate single lane structures. These local bridges are 343 feet in length and are owned by Mercer County. The proposed Kelly Road Bridge (T-388) project is located in the Borough of Sharpville and the City of Hermitage in Mercer County. The project consists of replacing two existing adjacent bridges with one structure. The first structure is a Parker Thru Truss bridge that is closed to all traffic, including pedestrian. The second structure is a two-span steel beam bridge. In order to construct the new structure, the proposed action involves: constructing a causeway downstream of the existing bridges; installing temporary towers under the existing single-span truss bridge; cutting and removing end sections of the truss bridge (for preservation); demolishing the remainder of the truss bridge; removing the downstream causeway; constructing and maintaining a temporary bridge; constructing a causeway upstream of the existing bridges; demolishing the existing two-span steel beam bridge; demolishing the existing abutments and pier; constructing new abutments and a pier (in a similar location); constructing one new 2-span bridge in the same location and configuration as the two-span bridge; removing the upstream causeway; and removing the temporary bridge.	MERCER COUNTY	Right of Way		\$8,000	\$0	\$(8,000)
109773	PA 18: PA 358 - Mill Hill Rd	This project is located on SR 18 from State Route 358 to the Greenville Borough line in Greenville Borough and Hempfield Township; Mercer County. The scope of the project is a 3R restoration/rehabilitation which includes mill & inlay, base repair, drainage updates, pavement markings, and ADA curb ramps.	PENNDOT	Preliminary Engineering	18	\$24,000	\$487,200	\$463,200
113974	SR 19: SR 358 to SR 1011	This project consists of 2.71 miles of resurfacing on State Route 19 from State Route 358 to State Route 1011 in Perry and Sandyhook townships, Mercer County.	PENNDOT	Preliminary Engineering	19	\$50,000	\$100,000	\$50,000
117671	US 62 and Neshannock Intersection	This project includes improvements at the intersection of US Route 62 and State Route 3037 in Mercer County.	PENNDOT	Preliminary Engineering	62	\$40,000	\$40,000	\$0
109340	US 62 Tunnel under Bessemer and LE RR	This project will include the replacement of the US 62 tunnel running under the Bessemer and Lake Erie railroad in Coolspring Township. It is in poor condition, narrow, has a low clearance and poor alignment.	PENNDOT	Preliminary Engineering	62	\$1,047,479	\$1,547,479	\$500,000
58052	US 62 Bridge over I-79	This project is for the replacement of the US Route 62 (Franklin Road) Bridge over Interstate 79 (Raymond P. Shafer Highway) in Jackson Township. The bridge is 326 feet in length.	PENNDOT	Preliminary Engineering	62	\$500,000	\$500,000	\$0
111622	Sharon Gateway Project	The project involves the beautification of the intersection of S Irvine Street and Shenango Valley Freeway which includes upgrades to signal equipment, addition of landscaping, providing new curbing and implemented Gateway Signs for the City of Sharon. The project will occur in the City of Sharon on US 62 and the intersection of Addison Avenue at the Pennsylvania-Ohio state line.	PENNDOT	Construction	62	\$933,711	\$933,711	\$0
118239	80 MM 10 - MM 15 High Friction Surface Treatment	This project includes installation of High Friction Surface Treatment at multiple locations on Interstate 80 from Mile Marker 10 to Mile Marker 15 in Mercer County.	PENNDOT	Preliminary Engineering	80	\$40,000	\$40,000	\$0
114778	I-80 Mercer County ITS Addition - TSMO	This project includes the installation of a dynamic message board sign on Interstate 80 Eastbound around Mile Marker 10 and install two cameras. One at Mile Marker 11 and one at Mile Marker 14. This project is TSMO funded.	PENNDOT	Preliminary Engineering	80	\$2,813	\$12,813	\$10,000
114778	I-80 Mercer County ITS Addition - TSMO	This project includes the installation of a dynamic message board sign on Interstate 80 Eastbound around Mile Marker 10 and install two cameras. One at Mile Marker 11 and one at Mile Marker 14. This project is TSMO	PENNDOT	Construction	80	\$403,433	\$590,933	\$187,500

		funded.							
114779	I-80/SR 19 Interchange ITS Addition - TSMO	This project includes installation of two dynamic message board signs on State Route 19 north and south bound approaching Interstate 80 as well as a new CCTV camera at the intersection on Interstate 80 and State Route 19. This is a TSMO funded project.	PENNDOT	Preliminary Engineering	80	\$2,812	\$12,812	\$10,000	
114779	I-80/SR 19 Interchange ITS Addition - TSMO	This project includes installation of two dynamic message board signs on State Route 19 north and south bound approaching Interstate 80 as well as a new CCTV camera at the intersection on Interstate 80 and State Route 19. This is a TSMO funded project.	PENNDOT	Construction	80	\$197,996	\$264,996	\$67,000	
98397	PA 173 and Yankee School Rd Intersection (D D P)	This project includes 2.82 miles of resurfacing/restoration (betterment) on State Route 173 (Sandy Lake Grove City Road) from Vath Road to past State Route 1004 (Yankee School Road) in Worth and Sandy Lake Townships, Mercer County. This project will start on SR 0173 at the intersection of 0173 and SR 965 in Worth Township, to the north and end at the intersection of SR 0173 and SR 0062 in Sandy Lake Township. Work will include mill and overlay of the existing roadway, drainage update, guide rail updates and intersection sight distance improvements.	PENNDOT	Construction	173	\$458,200	\$400,000	\$(58,200)	
109154	PA 173: Kocher Rd - Main Street	This project entails widening and reconstruction of State Route 173 from Kocher Drive to East Main Street in Grove City Borough. Also included is highway restoration (paving, drainage and signal improvements) along State Route 173 from West Main Street to Cranberry Road in Grove City Borough, Mercer County.	PENNDOT	Construction	173	\$100,000	\$100,000	\$0	
111157	SR 518/3025 Intersection	This project will encompass various safety improvements at the intersection of SR 518 (South Walnut St) and SR 3025 (Mercer Ave) in the Borough of Sharpsville, Mercer County. These improvements will include left turning lanes and signal upgrades. (This is not a signal coordination project)	PENNDOT	Preliminary Engineering	518	\$300,000	\$300,000	\$0	
109145	PA 718: Middlesex Rd to Broadway Ave	This restoration / betterment project includes mill & inlay, base repair, drainage updates, and pavement markings for 2.15 miles on SR 718 from the intersection of SR 760 (Broadway Ave.) to the intersection of SR 318 (Hubbard Middlesex Rd.) in Wheatland.	PENNDOT	Construction	718	\$2,708,000	\$2,636,282	\$(71,718)	
104111	Broadway Avenue - Ph 3	This project includes 0.5 miles of restoration/reconstruction on State Route 718 (Dock Street) from just north of Budd Street to just south of State Street in the City Sharon. Work involves reconstruction, intersection improvements (roundabout), and update traffic signals and sidewalks.	PENNDOT	Construction	718	\$429	\$44,852	\$44,423	
118222	Mercer County High Friction Surface Treatments	This project is to install High Friction Surface Treatment and centerline Reflective Pavement Markings along the curve on State Route 965 in Worth Township as well as State Route 62 in Coolspring Township, Mercer County.	PENNDOT	Preliminary Engineering	965	\$5,000	\$5,000	\$0	
1925	Blacktown Rd Brgd/I-79	This project includes the restoration/rehabilitation/replacement of the State Route 2006 (Blacktown Road) Bridge over Interstate 79 (Raymond P. Shafer Highway) in Springfield Township, Mercer County. Work involves the parapets, a waterproof membrane, patching the deck, substructure, beam patching, and plug dams. The bridge is 236 feet in length.	PENNDOT	Preliminary Engineering	2006	\$40,000	\$68,000	\$28,000	
1823	SR 2014 Brgd/Cool Spring	This project includes the replacement of the State Route 2014 (Scrubgrass Road) Bridge #2 over Cool Spring in Findley Township. The bridge is 126 feet in length.	PENNDOT	Construction	2014	\$1,767,000	\$1,900,000	\$133,000	
88482	Clintvill Rd Br over I-79	This project includes the rehabilitation/restoration of the State Route 2102 (Clintonville Road) Bridge over Interstate 79 (Raymond P. Shafer Highway) southbound in Findley Township, Mercer County. The bridge is 146 feet in length.	PENNDOT	Construction	2102	\$621,139	\$621,139	\$0	
88483	Clintville Rd Br 2 ov I-79	This project includes the rehabilitation/restoration of the State Route 2102 (Clintonville Road) Bridge #2 over Interstate 79 (Raymond P. Shafer Highway) northbound in Findley Township, Mercer County. The bridge is 139 feet in length.	PENNDOT	Construction	2102	\$295,161	\$600,000	\$304,839	
78943	SR 2104 Brgd over I-79	This project includes the rehabilitation/restoration of the State Route 2104 (Foxmine Road) Bridge over Interstate 79 (Raymond P. Shafer Highway) in Jackson Township. The bridge is 228 feet in length.	PENNDOT	Construction	2104	\$656,792	\$656,792	\$0	
109077	State St. Pedestrian Improvements	This project includes pedestrian improvements along State Street (SR 3008) between Boyd Drive to SR 18. It also includes intersection improvements that will extend about 300' north and south along Buhl Farm Drive (SR 3025), Mercer County.	PENNDOT	Final Design	3008	\$129,000	\$129,000	\$0	
117539	SR 3022 Bridge over the Shenango River	This project includes the rehabilitation/replacement of the structure carrying State Route 3022 over the Shenango River in Jefferson Township, Mercer County.	PENNDOT	Final Design	3022	\$75,000	\$75,000	\$0	
117539	SR 3022 Bridge over the Shenango River	This project includes the rehabilitation/replacement of the structure carrying State Route 3022 over the Shenango River in Jefferson Township, Mercer County.	PENNDOT	Construction	3022	\$860,250	\$750,000	\$(110,250)	
74670	SR 3039 Bridge over Lackawannock Creek	This project includes the rehabilitation/restoration of the State Route 3039 (Valley Road) Bridge over Lackawannock Creek in Jefferson Township. The bridge is 32 feet in length.	PENNDOT	Construction	3039	\$1,117,600	\$1,000,000	\$(117,600)	
1671	Kelly Rd Brs T-388 (Dual)	This project includes the replacement of the Kelly Road (Township Road 388) Bridges over the Shenango River in the City of Hermitage. Work involves two separate single lane structures. These local bridges are 343 feet in length and are owned by Mercer County. The proposed Kelly Road Bridge (T-388) project is located in the Borough of Sharpsville and the City of Hermitage in Mercer County. The project consists of replacing two existing adjacent bridges with one structure. The first structure is a Parker Thru Truss bridge that is closed to all traffic, including pedestrian. The second structure is a two-span steel beam bridge. In order to construct the new structure, the proposed action involves: constructing a causeway downstream of the existing bridges; installing temporary towers under the existing single-span truss bridge; cutting and removing end sections of the truss bridge (for preservation); demolishing the remainder of the truss bridge; removing the downstream causeway; constructing and maintaining a temporary bridge; constructing a causeway upstream of the existing bridges; demolishing the existing two-span steel beam bridge; demolishing the existing abutments and pier; constructing new abutments and a pier (in a similar location); constructing one new 2-span bridge in the same location and configuration as the two-span bridge; removing the upstream causeway; and removing the temporary bridge.	MERCER COUNTY	Final Design		\$(16,000)	\$153,000	\$0	

97322	US 19 Bridge/Munnel Run	This project includes the replacement of the State Route 19 (Franklin Street) Bridge over Munnel Run in Coolspring Township, Mercer County. The bridge is 28 feet in length.	PENNDOT	Construction	19	\$(17)	\$0	\$0
110168	Mercer- PA 58 Safety Study	This project includes a safety study along the SR 58 corridor in Mercer and Greenville Boroughs along with Jefferson, Coolspring and Delaware Townships, Mercer County. It's purpose is to identify future safety improvements. This study on the Mercer metropolitan MPO's long range plan.	PENNDOT	Study	58	\$(32,032)	\$0	\$0
105775	US 62/State St Intersection	The purpose of this project is to provide an efficient and safer intersection for both vehicles and pedestrians. Need(s): Congestion issues plague this intersection and the corridor. The intersection shows up on high-crash list locations for the Shenango Valley MPO. Pedestrian access near the intersection and mall is not defined and current ADA criteria are not met. This project is an intersection safety improvement project constructing a roundabout which includes pedestrian accommodations including ADA ramps and crosswalks, and landscaping which was outlined in a 2012 PCTI (Pennsylvania Community Transportation Initiative) study along this corridor.	PENNDOT	Final Design	62	\$(221,805)	\$0	\$0
105775	US 62/State St Intersection	The purpose of this project is to provide an efficient and safer intersection for both vehicles and pedestrians. Need(s): Congestion issues plague this intersection and the corridor. The intersection shows up on high-crash list locations for the Shenango Valley MPO. Pedestrian access near the intersection and mall is not defined and current ADA criteria are not met. This project is an intersection safety improvement project constructing a roundabout which includes pedestrian accommodations including ADA ramps and crosswalks, and landscaping which was outlined in a 2012 PCTI (Pennsylvania Community Transportation Initiative) study along this corridor.	PENNDOT	Construction	62	\$(1,177)	\$115,000	\$0
114908	Interstate 80 Roadside Safety Audit - Mercer County	This project includes a safety study and will make recommendations that will be used to complete safety improvements along the Interstate 80 corridor from MM 0 to MM 14 in Mercer County. This project is being funded with HSIP Set-Aside funds.	PENNDOT	Study	80	\$(13,402)	\$0	\$0
88481	Fredonia Rd Br over I-79	This project includes the rehabilitation/restoration of the State Route 1004 (Fredonia Road) Stoneboro Bridge over Interstate 79 (Raymond P Shafer Highway) in Lake Township, Mercer County. The bridge is 228 feet in length.	PENNDOT	Construction	1004	\$(148,936)	\$0	\$0
1528	Carlton Rd Br/New Lebanon	This project includes the replacement along with a twelve (12) mile detour of the State Route 1015 (Carlton Road) Bridge over French Creek and an at grade crossing with Western New York and Pennsylvania Railroad (DOT #262821C) in French Creek Township. The bridge is 276 feet in length.	PENNDOT	Preliminary Engineering	1015	\$(77,337)	\$0	\$0
111163	Hermitage Bikeway Project	This project will add 5' bike lanes on either side of both Thorton Ave. & Forker Blvd., widen each lane to 10' for a total of 30' and realign the intersection from its current configuration of a "Y" to a "T"	PENNDOT	Construction	3021	\$(15,260)	\$33,500	\$0

* Negative amounts in the obligation column are a result of de-obliatime unused funds for a project. De-obliatime is a release of funds due to either the cancelation or completion of a project.

SVATS MPO FFY 2022 Transit Annual Obligation Report - Public Transit

Capital Project Obligation - October 1, 2021 - September 30, 2022

Project Title	Description	MPMS	Amount	Federal #	Federal Category	Federal	Local	Balance
Vehicle Purchase	ROLLING STOCK	102638	615,936.00	PA-2022-055	5307	\$407,985		\$615,936
Vehicle Purchase	ROLING STOCK	102638			5339	\$84,763		
Shop/Garage Equip.	PORTABLE JACKS	83656	\$67,844		5307	\$54,275	\$441	\$0
Shop/Garage Equip.	TIRE CHANGER	83656	\$8,000	PA-2020-054	5307	\$6,400	\$52	\$0
Shop/Garage Equip.	EMAIL ARCHIVE	83656	\$6,000	PA-2022-055	5307	\$4,800	\$39	\$0
Shop/Garage Equip.	IT CONFERENCE EQUIP	83658	\$23,726	PA-2021-040	5307	\$18,981	\$154	\$0
Shop/Garage Equip.	CONFERENCE FURNTIURE	83658	\$1,798	PA-2021-040	5307	\$1,438	\$12	\$0
Replace Admin. Vehicle	ADMINISTRATIVE VEHICLE	106707	\$34,094	PA-2020-054	5307	\$27,275	\$222	\$0
Totals			\$141,462			\$113,169	\$920	\$0
ADA	ADA	77148	\$14,449.00	PA-2021-040	5307	\$11,559.00		\$0
ADA	ADA	77148	\$14,651.00	PA-2021-040	5307	\$11,721.00		\$0
ADA	ADA	77148	\$13,969.00	PA-2021-040	5307	\$11,175.00		\$0
ADA	ADA	77148	\$14,973.00	PA-2021-040	5307	\$11,978.00		\$0
			\$58,042.00			\$46,433.00		\$0
PREV. MAINT.	PREV. MAINT.	83653	\$72,848.00	PA-2021-040	5307	\$58,278.00		\$0
PREV. MAINT.	PREV. MAINT.	83653	\$91,911.00	PA-2021-040	5307	\$73,529.00		\$0
PREV. MAINT.	PREV. MAINT.	83653	\$56,976.00	PA-2021-040	5307	\$45,581.00		\$0
PREV. MAINT.	PREV. MAINT.	83653	\$3,265.00	PA-2021-040	5307	\$2,612.00		\$0