

Annual Listing of Obligated Projects

Mercer County, PA



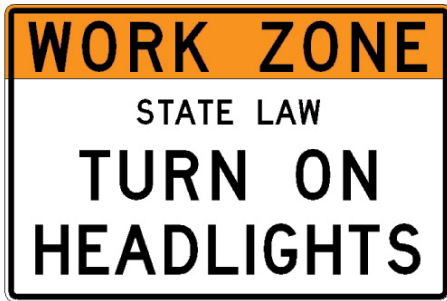
Shenango Valley Area Transportation Study
Metropolitan Planning Organization

2021

Purpose

This annual listing of Mercer County, Pennsylvania's obligated projects is a requirement of federal transportation legislation. In November of 2021, the United States Government passed the Infrastructure Investment and Jobs Act (IIJA), replacing the Fixing America's Surface Transportation Act (FAST Act) which existed throughout most of calendar-year 2021 and for several years prior. Regardless of the act, the requirement is the same: Metropolitan Planning Organizations (MPOs) must publish a list of all projects for which federal funds have been obligated during the previous year. This report satisfies this requirement, listing the federally-funded transportation projects in Mercer County that were obligated in federal fiscal year (FFY) 2021, which began on October 1, 2020 and ended September 30, 2021.

The Federal Highway Administration (FHWA) defines obligation as the federal government's legal commitment to pay or reimburse states or other entities for the federal share of a project's eligible costs. Thus, an obligated project is one that has been approved by the federal government for reimbursement, though not necessarily reimbursed yet.



Also, not all obligated projects were initiated or completed during the previous year, and the obligated project cost listed in this report does not always equal the total, final project cost.

Regional Context and Transportation Network

The 48 municipalities comprising Mercer County, in total, contain just over 110,000 people according to the 2020 U.S. Census. The majority of the county's municipalities are rural in character and contain fewer




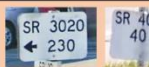


than 2,000 people. The two most populous municipalities—the Cities of Hermitage and Sharon—are both part of the Shenango Valley Region along the western edge of the county, which accounts for about 40% of the total county population. The Grove City and Greenville-Reynolds areas are the other dominant regional centers of Mercer County. These are located in the southeast and northwest areas of the county, respectively.

The transportation network consists of three Interstate Highways, 17 two-or-three digit state or U.S. routes, and dozens of four-digit state routes. Together, this network is maintained by PennDOT and consists of nearly 740 lane miles, or over 36% of the overall roadway network.

Along these roadways are hundreds of bridges ranging from small culverts to large viaducts, sidewalks, bike lanes, traffic signals, and

PennDOT-Maintained Road Network

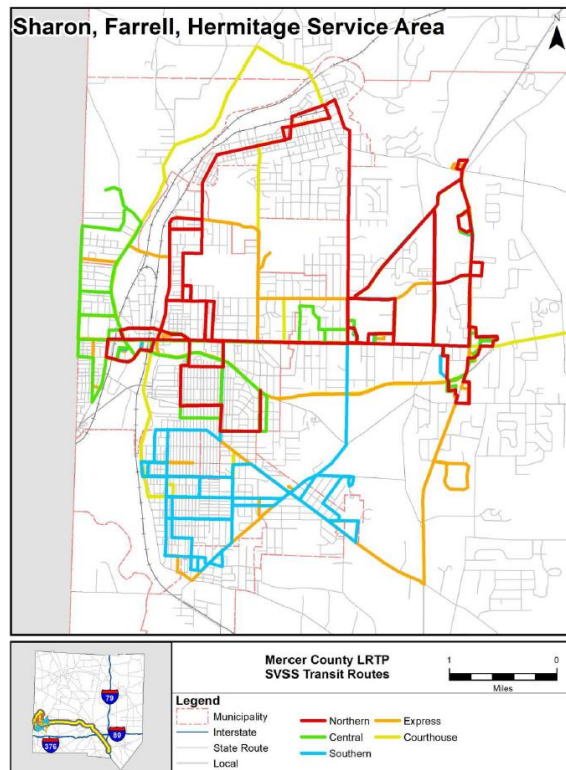
Roadway Type	Examples in Mercer County
Interstate Highway	
Two-or-Three-Digit U.S. Route	
Two-or-Three-Digit State Route	
Four-Digit State Route	

other assets. PennDOT and the SVATS MPO are responsible for any federal funds utilized within this network (and, on occasion when applicable, off-network).

The transit system in Mercer County consists of two systems: the

Shenango Valley Shuttle Service (SVSS) and the Mercer County

Community Transit (MCCT). The SVSS is a fixed-route service which runs five routes, mostly throughout the Shenango Valley, which is the most urbanized/populated area of Mercer County. The MCCT service runs throughout Mercer County and is an on-demand service. These smaller vehicles run citizens door-to-door, and appointments must be scheduled in advance.



About the SVATS MPO

The Shenango Valley Area Transportation Study (SVATS) MPO is Mercer County's federally mandated organization responsible for transportation related issues and the planning/programming of federal transportation funds. Despite the official name referring to the Shenango Valley region specifically, the MPO carries this responsibility for the entirety of Mercer County.

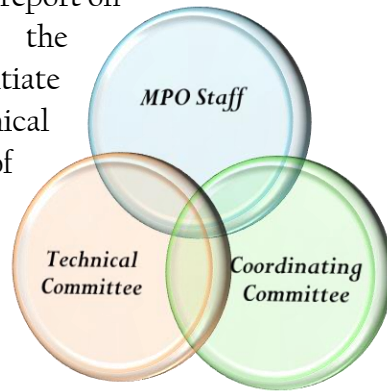
Professional staff members of the Mercer County Regional Planning Commission (MCRPC) run the daily business of the MPO. PennDOT District 1-0 and Central Office staffs work with the MCRPC staff on a near-daily basis and are intimately involved with the programming of funds and the implementation of projects. In addition to working with PennDOT, MPO staff works closely and collaboratively with Mercer County's municipal officials, the general public, modal operators, other regional MPOs and RPOs (Rural Planning Organizations), and various other transportation stakeholders.

Two committees direct the work that the aforementioned staff accomplishes. The larger of the two committees is the Coordinating Committee. This group is responsible for ensuring the maintenance of planning eligibility for state and federal grants and the maintenance of both the Long-Range Transportation Plan (LRTP) and the more short-



range Transportation Improvement Program (TIP). This committee meets on a quarterly basis (additional meetings are occasionally held, if needed) to vote on any action items that come before the MPO and to discuss transportation-related issues in Mercer County. The as well. The SVATS MPO continues to promote equal representation throughout the County.

The other MPO committee is the Technical Advisory Committee (TAC), which has the duty to study and report on technical aspects as directed by the Coordinating Committee and to initiate studies and recommendations on technical aspects in pursuance of the objectives of the MPO's work program. This committee meets on an as-needed basis. Some years, the TAC may meet three or four times, but other years it may only meet once or not at all.



Coordinating Committee has 25 members, the maximum currently allowed according to our MPO's Bylaws. Most members are municipal-based, though the county, the county's transit provider, and PennDOT district and central office staffs have membership.

Both of these committees, as well as steering committees set up for particular planning studies, work closely with MPO staff and PennDOT D-1 to move projects from ideas into reality. As these ideas advance, significant consideration is given to safety, community character, efficiency of the system, and how an improvement might best serve various modes as applicable (vehicular traffic, public transit, freight needs, bicyclists, pedestrians, etc.). An increasing level of analysis goes into determining a project's worth based on performance measures (both the existing performance and its ability to improve performance) and the effects on traditionally underserved populations. This ideally reflects a program of projects that is not only equitable but allows our region's limited dollars to go further.



How to Read This Report

The charts on the following pages show each federally-obligated transportation project in Mercer County during federal fiscal year 2020. Two separate reports are included: (1.) Highway and Bridge and (2.) Public Transit. Each project within the appropriate report is listed on its own row; the columns describe numerous attributes of each project. The column headings represent the following:

MPMS/PROJECT #	Project Identification # in the Multimodal Project Management System (MPMS)
PROJECT TITLE	Name of the project in MPMS
PROJECT LIMITS	Defines project geographic limits
PROJECT DESCRIPTION	Defines project scope of work
PROJECT CLASS	Defines project work classification
RESPONSIBLE AGENCY/SPONSOR	Defines project ownership
PROJECT LENGTH	Defines project termini
PHASE	Defines phase of project (see project phase information listing above)
STATE ROUTE	State Route number for the project
OBLIGATION AMOUNT	Federal funds obligated during the time period of the report
FFY 2019-2022	Dollars programmed for the project during each year of the 4-year TIP*
PROGRAM TOTAL	Total dollars programmed for the project during the 4-year TIP*
ESTIMATED TOTAL PROJECT COST	Total project cost estimate summary

*- TIP is the Transportation Improvement Program, or the 4-year listing of programmed projects



Funding Codes and Project Phase Information

Bridge Off—Bridge off the Federal Aid System (locally owned)

Enhancements—Transportation Alternatives Set-Aside Program

NHPP—National Highway Performance Program

Safety Highway—Safety Improvement Program

STP—Surface Transportation Program

STU—Surface Transportation Program-Urban Program

Project Phase—Project Phase Description

CON—Construction

FD—Final Design

PE—Preliminary Engineering

ROW—Right of Way

STUDY—Study

UTL—Utility

SVATS MPO FFY 2021 ANNUAL OBLIGATION REPORT - HIGHWAY AND BRIDGE (page 1)

All projects are located in Mercer County, PA and within PennDOT Engineering District 1-0



* Negative amounts in the obligation column are a result of de-obligating unused funds for a project. De-obligation is a release of funds due to either the cancelation or completion of a project.

MPMS #	PROJECT TITLE	PROJECT DESCRIPTION	PROJECT ADMINISTRATOR	PHASE	STATE ROUTE	OBLIGATION AMOUNT*	PROGRMD. TOTAL	FED. FUNDS REMAINING
110125	Mercer 2021 AWP	This project includes installing, repairing and replacing reflective pavement markers on various state routes and in various municipalities in Mercer County. (AWPM = All-weather pavement markers)	PENNDOT	Construction		\$ 65,476	\$ 65,476	\$ 0
1671	Kelly Rd. Bridges T-388 (Dual)	The proposed Kelly Road Bridge (T-388) project is located in the Borough of Sharpsville and the City of Hermitage. Work includes replacing two existing open-grid bridges with a one steel girder bridge with sidewalk and two 10-foot travel lanes. The project also includes new roadway approaches and updated guiderail. One of the bridges included in the project is a two-span, rolled I-Beam stringer bridge built in 1967. It is used as a single lane bridge with traffic controlled by stop signs. It is classified as poor condition. The second bridge, a steel thru truss structure built in 1897, is already closed due to severe deterioration.	MERCER COUNTY	Final Design		\$ 153,000	\$ 153,000	\$ 0
			MERCER COUNTY	Preliminary Engineering		\$ (168,372)	\$ 0	\$ 0
			MERCER COUNTY	Construction		\$ (181,000)	\$ 0	\$ 0
111434	Alan Avenue Sidewalk Project	The project is located on Alan Avenue from North Race Street to College Avenue in the Borough of Greenville, Mercer County. The focus of the project is to provide a sidewalk along the northern side of Alan Avenue to provide pedestrian access from North Race Street to College Avenue. Drainage improvements will also be made along with additional signage. These enhancements will greatly improve safety and provide a safe pedestrian connection from Thiel College to the Borough Park.	TOWN OF GREENVILLE	Construction		\$ 222,373	\$ 304,373	\$ 82,000
98384	PA 18: Birchwood to Rutledge	This project includes 2.31 miles of rehabilitation/restoration on State Route 18 (Hermitage Road) from Birchwood Drive to State Route 3022 (Rutledge Road) in Pymatuning Township.	PENNDOT	Construction	18	\$ 91,249	\$ 91,249	\$ 0
109773	PA 18 (and 58): PA 358 to Mill Hill Rd.	This project is located on SR 18/58 from State Route 358 to the Greenville Borough line in Greenville Borough and Hempfield Township, Mercer County. The scope of the project is a 3R restoration/rehabilitation which includes mill & inlay, base repair, drainage updates, pavement markings, and ADA curb ramps. Also included is the realignment of the signalized intersection in front of Thiel College (College Ave. at Packard Ave.)	PENNDOT	Preliminary Engineering	18	\$ 463,200	\$ 463,200	\$ 0
114013	SR 18: SR 358 to Four Lane	This project includes paving approximately 1.5 miles of State Route 18 from State Route 358 in Greenville Boro to the beginning of the four lanes in West Salem Township, Mercer County.	PENNDOT	Preliminary Engineering	18	\$ 100,000	\$ 100,000	\$ 0
110764	PA 18/358 and SR 4005 (High Street) Intersection	This project includes congestion reduction and safety improvements at the intersection of PA 18 and North 3rd Street and the intersection of PA 18 and SR 4005 (High Street) in the Borough of Greenville. Work involves the improvements to signal equipment along with intersection improvements including signal coordination, detection, and lane configuration as needed.	PENNDOT	Preliminary Engineering	18	\$ 214,000	\$ 214,000	\$ 0
113974	SR 19: SR 358 to SR 1011	This project consists of 2.71 miles of resurfacing on State Route 19 from State Route 358 to State Route 1011 in Perry and Sandycreek townships, Mercer County.	PENNDOT	Preliminary Engineering	19	\$ 50,000	\$ 50,000	\$ 0
105775	US 62/State St Intersection	This project is an intersection safety improvement project constructing a roundabout which includes pedestrian accommodations including ADA ramps and crosswalks, and landscaping which was outlined in a 2012 PCTI (Pennsylvania Community Transportation Initiative) study along this corridor.	PENNDOT	Construction	62	\$ 115,000	\$ 115,000	\$ 0
			PENNDOT	Final Design	62	\$ (200,000)	\$ 0	\$ 0
114778	I-80 Mercer County ITS Addition - TSMO	This project includes the installation of a dynamic message board sign on Interstate 80 Eastbound around Mile Marker 10 and install two cameras. One at Mile Marker 11 and one at Mile Marker 14. This project is TSMO funded.	PENNDOT	Preliminary Engineering	80	\$ 10,000	\$ 10,000	\$ 0
			PENNDOT	Construction	80	\$ 187,500	\$ 412,500	\$ 225,000
114779	I-80/SR 19 Interchange ITS Addition - TSMO	This project includes installation of two dynamic message board signs on State Route 19 north and south bound approaching Interstate 80 as well as a new CCTV camera at the intersection on Interstate 80 and State Route 19. This is a TSMO funded project.	PENNDOT	Preliminary Engineering	80	\$ 10,000	\$ 10,000	\$ 0
			PENNDOT	Construction	80	\$ 67,000	\$ 185,000	\$ 118,000
114012	SR 322: Venango Cty to Crawford Cty	This project includes paving 1.14 miles of State Route 322 in French Creek Township, Mercer County.	PENNDOT	Preliminary Engineering	322	\$ 200,000	\$ 200,000	\$ 0

SVATS MPO FFY 2021 ANNUAL OBLIGATION REPORT - HIGHWAY AND BRIDGE (page 2)



All projects are located in Mercer County, PA and within PennDOT Engineering District I-0

* Negative amounts in the obligation column are a result of de-obligating unused funds for a project. De-obligation is a release of funds due to either the cancelation or completion of a project.

MPMS	PROJECT TITLE	PROJECT DESCRIPTION	PROJECT ADMINISTRATOR	PHASE	STATE ROUTE	OBLIGATION*	PROG. TOTAL	FED FUNDS REMAINING
1486	Broadway Avenue, Phase 1 (Broadway and MLK Jr. Blvd.)	This project includes 1.18 miles of reconstruction/safety improvements on Broadway Avenue from State Route 718 (Council Avenue) north to Negley Street in the Borough of Wheatland and the City of Farrell. Work involves reconstruction for turning lanes, intersection improvements, roadway resurfacing, updating of traffic signals and sidewalk installation.	PENNDOT	Final Design	718	\$1,158	\$1,158	\$0
			PENNDOT	Right of Way	718	\$ (5,200)	\$0	\$0
104111	Broadway Avenue, Phase 3 (Dock St.)	This project includes 0.5 miles of restoration/reconstruction on State Route 718 (Dock Street) from just north of Budd Street to just south of State Street in the City Sharon. Work involves reconstruction, intersection improvements (roundabout), and update traffic signals and sidewalks.	PENNDOT	Construction	718	\$ 43,029	\$ 44,475	\$1,446
1925	Blacktown Rd. Bridge Over I-79	This project includes the restoration/rehabilitation/replacement of the State Route 2006 (Blacktown Road) Bridge over Interstate 79 (Raymond P. Shafer Highway) in Springfield Township, Mercer County. Work involves the parapets, a waterproof membrane, patching the deck, substructure, beam patching, and plug dams. The bridge is 236 feet in length.	PENNDOT	Preliminary Engineering	2006	\$ 28,000	\$ 28,000	\$0
96362	SR 3008: State St. Streetscape	This project includes .68 miles of restoration on State Route 3008 and State Route 518 (State Street) from Forker Boulevard to Oakland Avenue in the City of Sharon. Work involves resurfacing, ADA curb ramps, crosswalks, medians, signage, signal timing modifications, landscaping and furnishings.	PENNDOT	Construction	3008	\$ 36,606	\$ 36,606	\$0
109077	State St. Pedestrian Improvements	This project includes pedestrian improvements along State Street (SR 3008) between Boyd Drive to SR 18. It also includes intersection improvements that will extend about 300' north and south along Buhl Farm Drive (SR 3025), Mercer County.	PENNDOT	Right of Way	3008	\$ 80,960	\$ 80,960	\$0
111163	Hermitage Bikeway Project	This project will add 5' bike lanes on either side of both Thorton Ave. & Forker Blvd., widen each lane to 10' for a total of 30' and realign the intersection from its current configuration of a 'Y' to a 'T'	PENNDOT	Construction	3021	\$ 33,500	\$ 33,500	\$0
111087	Sharpsville Road & Multimodal Imprv.	This project is the reconstruction of West High Street and North Sixth streets. Other activities will include directional signage, sidewalk reconstruction/restoration, pedestrian and ADA access, and upgrades to the catch basin inlet grates to Bicycle and wheelchair safe grates.	PENNDOT	Construction	518 (partial)	\$ (24)	\$0	\$0
106765	SR 18 and SR 518 (Longview Rd.) Intersection (Bobby's Corner)	This project will include safety improvements at the intersection of SR 18 and 518 (Bobby's Corner's) and Longview Rd. in the City of Hermitage. These improvements will include ADA compliant curb ramps along with a complete signal upgrade which encompasses new poles and a left turn phase.	PENNDOT	Utility	18	\$ (40,000)	\$0	\$0
			PENNDOT	Right of Way	18	\$ (31,630)	\$0	\$0
			PENNDOT	Construction	18	\$ (19)	\$0	\$0
106754	South Diamond St. Streetscape	This project includes streetscape improvements on S. Diamond Street (State Route 58) between Erie Street (State Route 19) and Pitt Street in the Borough of Mercer. Work will include new sidewalks, landscaping, decorative lighting, curb including ADA compliant ramps and pavement markings.	MERCER BOROUGH	Construction	58	\$ (22,097)	\$0	\$0
110218	Mercer US 62 Safety Study	This project includes a safety study along the SR 62 corridor in the Cities of Sharon and Hermitage and Jefferson, Lakawonnock and French Creek Townships and terminating in Mercer Borough. Its purpose is to identify future safety improvements. This study on the Mercer metropolitan MPO's long range plan.	PENNDOT	Study	62	\$ (4,008)	\$0	\$0
109154	PA 173: Kocher Rd. to Main Street	This project entails widening and reconstruction of State Route 173 from Kocher Drive to East Main Street in Grove City Borough. Also included is highway restoration (paving, drainage and signal improvements) along State Route 173 from West Main Street to Cranberry Road in Grove City Borough, Mercer County.	PENNDOT	Construction	173	\$ (475,000)	\$0	\$0

SVATS MPO FFY 2021 ANNUAL OBLIGATION REPORT - HIGHWAY AND BRIDGE (page 3)

All projects are located in Mercer County, PA and within PennDOT Engineering District 1-0



* Negative amounts in the obligation column are a result of de-obligating unused funds for a project. De-obligation is a release of funds due to either the cancelation or completion of a project.

MPMS	PROJECT TITLE	PROJECT DESCRIPTION	PROJECT ADMINISTRATOR	PHASE	STATE ROUTE	OBLIGATION*	PROG. TOTAL	FED FUNDS REMAINING
1923	W. Middlesex Viaduct	This project includes the replacement of the State Route 318 (Main Street) West Middlesex Viaduct over Garfield Street, Consolidated Rail Corporation (DOT #544702Y), and the Shenango River in the Borough of West Middlesex, Mercer County. The bridge is 715 feet in length.	PENNDOT	Construction	318	\$(53,189)	\$0	\$0
106759	Sharon Bike/Ped Improvements	This project includes 1525 LF of Silver St Between N Oakland and Sharpsville Ave, 7564 LF of Sharpsville Ave (SR 518) between E State St and Hall Ave and 1263 LF of Thornton St between Hall Ave and Bechtol Ave. Work will include inlet upgrades, sidewalk and curb replacement, ADA compliant ramps, milling and paving with line striping and signage for bike lanes.	CITY OF SHARON	Construction	518	\$(33,975)	\$0	\$0
69966	Broadway Avenue, Phase 2 (MLK Jr. Blvd. and Dock St.)	This project includes 1.54 miles of restoration/reconstruction on State Route 718 (Martin Luther King Jr. Boulevard/Dock Street) from Negley Street to Connelly Boulevard in the Cities of Farrell and Sharon. Work involves reconstruction, intersection improvements, and update traffic signals and sidewalks.	PENNDOT	Construction	718	\$(1,846)	\$0	\$0
1528	Carlton Rd Bridge (Over French Creek) New Lebanon	This project includes the replacement along with a twelve (12) mile detour of the State Route 1015 (Carlton Road) Bridge over French Creek and an at grade crossing with Western New York and Pennsylvania Railroad (DOT #262821C) in French Creek Township. The bridge is 276 feet in length.	PENNDOT	Construction	1015	\$(2,410)	\$0	\$0
58080	SR 2001 over Indian Run Bridge	This project includes the replacement of the State Route 2001 (New Castle Road) Bridge over Indian Run in Wilmington and Springfield Townships, Mercer County. The bridge is 30 feet in length.	PENNDOT	Construction	2001	\$(25,163)	\$0	\$0
102554	State St: Forker Blvd. to PA 18	This project includes restoration along State Route 3008 (State Street) from Forker Boulevard to State Route 18 in the City of Hermitage. Work involves paving, sidewalks, curbing, drainage improvements, intersection improvements and pedestrian accommodations.	PENNDOT	Right of Way	3008	\$(364)	\$0	\$0
			PENNDOT	Construction	3008	\$(4,566)	\$0	\$0

SVATS MPO FFY 2021 ANNUAL OBLIGATION REPORT - PUBLIC TRANSIT

All projects are located in Mercer County and administrated by the Mercer County regional Council of Governments/City of Sharon.



MPMS #	PROJECT TITLE	PROJECT DESCRIPTION	FEDERAL FUND CATEGORY	OBLIGATION AMOUNT	PROGRAMMED TOTAL	FED. FUNDS REMAINING
102638	Vehicle Purchase	Rolling Stock - purchasing/replacement of fixed route buses	5307	\$179,278	\$466,370	\$4,367
102638	Vehicle Purchase		5339	\$210,084		\$0
102638	Vehicle Purchase		5339	\$70,788		\$0
95413	Office and Garage Improvements	Sidewalk Replacement	5307	\$13,736	\$100,000	\$0
95413	Office and Garage Improvements	Sidewalk Replacement	5307	\$14,842		\$11,422
95413	Office and Garage Improvements	Garage Lighting	5307	\$13,882		\$2,118
95413	Office and Garage Improvements	Exterior Lighting	5307	\$1,699		\$13,101
95413	Office and Garage Improvements	Administrative office carpet	5307	\$543		\$0
95413	Office and Garage Improvements	Carpet installation	5307	\$5,599		\$6,358
77148	ADA Related Expenses	ADA: Funding paid to the shared ride provider for transporting SVSS eligible ADA passengers.	5307	\$10,026	\$77,150	\$0
77148	ADA Related Expenses		5307	\$20,810		\$0
77148	ADA Related Expenses		5307	\$11,812		\$0
77148	ADA Related Expenses		5307	\$11,812		\$0
83653	Asset Management Expenses	Asset Maintenance Expense - The SVSS will continue to expend Section 5307 funds according to the appropriate guidelines to maintain transit assets.	5307	\$90,000	\$180,000	\$0
83653	Asset Management Expenses		5307	\$45,000		\$0
83653	Asset Management Expenses		5307	\$45,000		\$0