

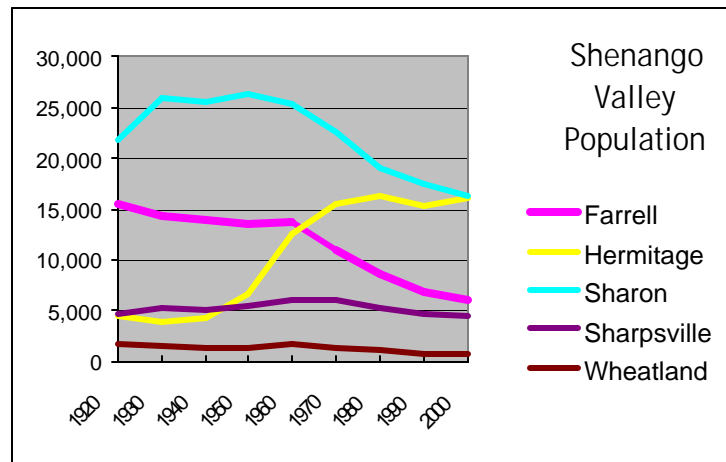
# Shenango Valley Demographic Analysis

Prepared by Mercer County Regional Planning Commission

## Part I Population, projection, age, race & households Prepared November 2001

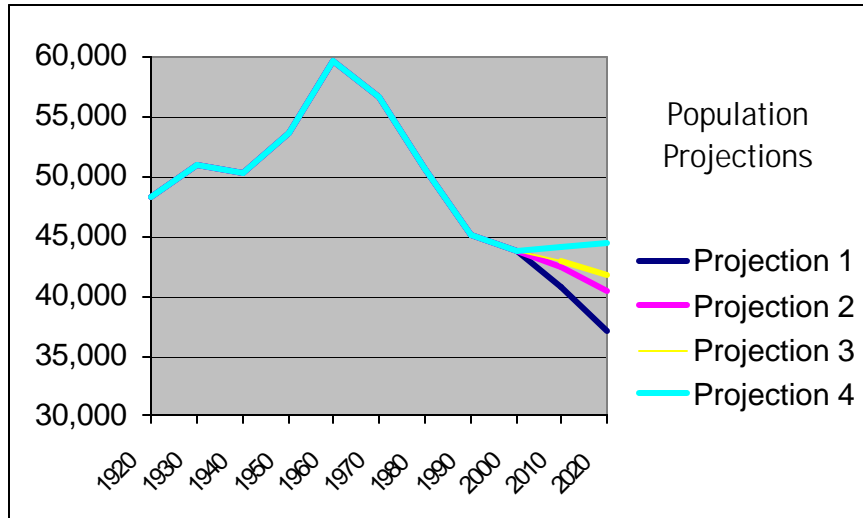
Population	1920	1930	1940	1950	1960	1970	1980	1990	2000	% Change 90-00
Farrell	15,586	14,359	13,899	13,644	13,793	11,000	8,645	6,841	6,050	-11.6%
Hermitage	4,569	3,984	4,295	6,725	12,635	15,421	16,365	15,300	16,157	5.6%
Sharon	21,747	25,908	25,622	26,454	25,267	22,653	19,057	17,493	16,328	-6.7%
Sharpsville	4,674	5,194	5,129	5,414	6,061	6,126	5,375	4,729	4,500	-4.8%
Wheatland	1,742	1,518	1,421	1,402	1,813	1,421	1,132	760	748	-1.6%
Total	48,318	50,963	50,366	53,639	59,569	56,621	50,574	45,123	43,783	-3.0%

- Population in the Shenango Valley has been declining since a peak in 1960.
- The loss is primarily a result of two trends: 1) net out-migration (more people moving out of the Valley than in), and 2) declining birth rate.
- Population has been shifting from the inner urban areas of Sharon, Farrell, and Sharpsville to Hermitage.



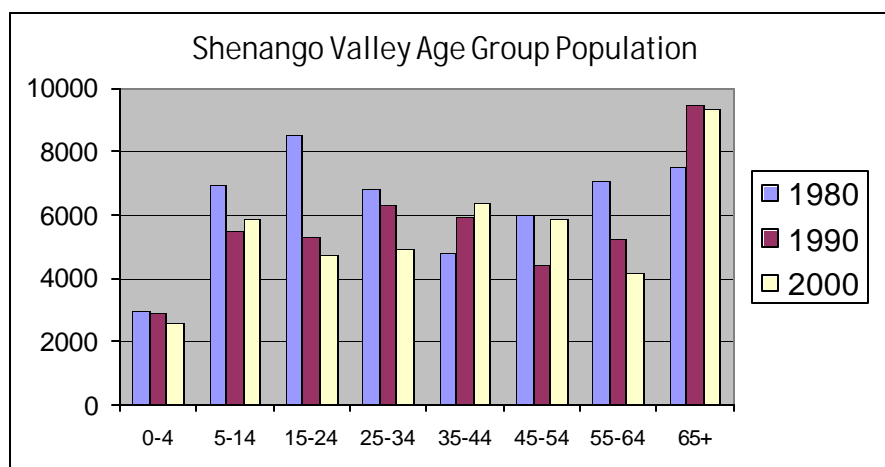
Projection	2000	2010	2020
PROJECTION #1 – Continuation of 1980-2000 trends	43,783	40,774	37,049
PROJECTION #2 – Continuation of 1990-2000 trends	43,783	42,420	40,483
PROJECTION #3 – Net migration of "0"	43,783	42,842	41,737
PROJECTION #4 – Slight net in-migration	43,783	44,057	44,379

- If out-migration trends of the 80s and 90s continue, the Valley will lose population.
- Even if migration is not a factor, the Valley will lose population because there are currently more deaths than births.
- The Valley will need some net in-migration to stabilize population.



Age groups	1980	% of Total	1990	% of Total	2000	% of Total	% Change 90-00	% Change 80-00
0-4	2,946	5.8%	2,868	6.4%	2,598	5.9%	-9.4%	-11.8%
5-14	6,934	13.7%	5,518	12.2%	5,888	13.4%	6.7%	-15.1%
15-24	8,516	16.8%	5,327	11.8%	4,717	10.8%	-11.5%	-44.6%
25-34	6,834	13.5%	6,317	14.0%	4,890	11.2%	-22.6%	-28.4%
35-44	4,800	9.5%	5,955	13.2%	6,343	14.5%	6.5%	32.1%
45-54	5,993	11.8%	4,426	9.8%	5,885	13.4%	33.0%	-1.8%
55-64	7,065	14.0%	5,222	11.6%	4,141	9.5%	-20.7%	-41.4%
65+	7,486	14.8%	9,490	21.0%	9,321	21.3%	-1.8%	24.5%
Total	50,574	100.0%	45,123	100.0%	43,783	100.0%	-3.0%	-13.4%

- Like the state and nation, Valley population has been aging as the largest generation – the boomers – grows older and as life expectancy increases.
- However, the Valley’s population is older, having 21.3% age 65+ compared the county’s 18.1% and state’s 15.6%.



The most interesting trends are revealed by comparing the population of an age group in one decade to the population of the ten-years-older age group in the next decade. That cohort should hold the same people except as affected by deaths or in- or out-migration.

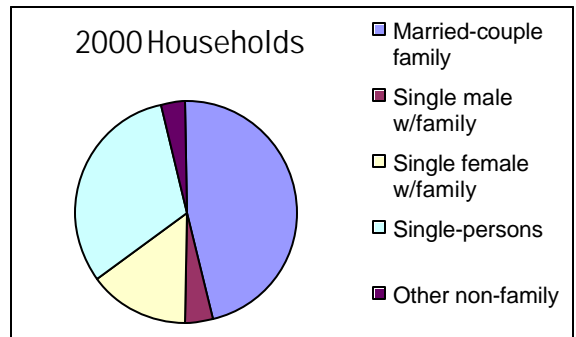
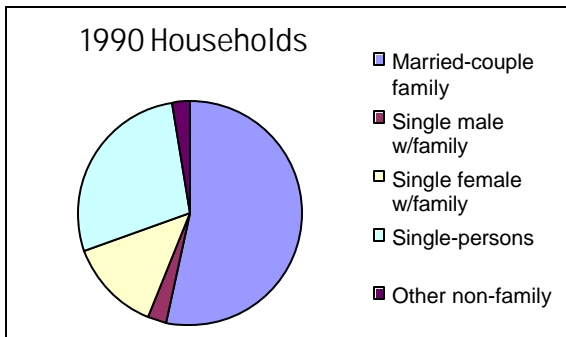
<b>Median Age</b>	<b>1980</b>	<b>1990</b>	<b>2000</b>
Farrell	35.8	39.8	40.1
Hermitage	36.5	41.5	44.1
Sharon	33.6	36.4	38.4
Sharpsville	35.6	38.4	40.5
Wheatland	37.6	49.9	45.8
Mercer County	32.1	36.4	39.6
Pennsylvania	32.1	35.4	38.0

- The cohorts age 15-24 and 25-35 in 1980 which aged to become 25-34 and 35-44 in 1990 lost over 3,000 people combined. Since death rates are only about 1% for these ages, the loss was almost entirely out-migration. This was a significant loss of young adult population.
- However, this trend was less evident in the cohorts age 15-24 and 25-35 in 1990 which aged to become 25-34 and 35-44 in 2000. Their combined loss was only 200+ persons, about half of which can be attributed to deaths. This indicates stability of young adult population.

<b>Race 2000</b>	White	%	Afr. Amer.	%	Other	%	Total
Farrell	3,042	50.3%	2,826	46.7%	182	3.0%	6,050
Hermitage	15,344	95.0%	500	3.1%	313	1.9%	16,157
Sharon	14,114	86.4%	1,771	10.8%	443	2.7%	16,328
Sharpsville	4,329	96.2%	104	2.3%	67	1.5%	4,500
Wheatland	643	86.0%	90	12.0%	15	2.0%	748
Total SV	37,472	85.6%	5,291	12.1%	1,020	2.3%	43,783
Mercer County	112,031	93.1%	6,318	5.3%	1,944	1.6%	120,293
Pennsylvania		85.4%		10.0%		4.6%	

- The Shenango Valley overall has a racial composition typical to that of Pennsylvania.

<b>Households</b>	1990		2000		% change 90-00
	No.	%	No.	%	
Total households	18,412		18,365		-0.3%
Family households	12,765	69.3%	11,892	64.8%	-6.8%
Married-couple family	9,801	53.2%	8,484	46.2%	-13.4%
Male head, no wife	542	2.9%	691	3.8%	27.5%
Female head, no husband	2,422	13.2%	2,717	14.8%	12.2%
Single-person households	5,211	28.3%	5,800	31.6%	11.3%
Other non-family households	436	2.4%	673	3.7%	54.4%



- Households are changing following a state and national trend. They continue to get smaller. The numbers of single-head households, single-person households, and non-family households are growing while the number of family households is decreasing.

Average Household Size	1980	1990	2000
Farrell	2.75	2.49	2.37
Hermitage	2.75	2.43	2.32
Sharon	2.59	2.41	2.33
Sharpsville	2.65	2.42	2.35
Wheatland	2.64	2.11	2.14
Mercer County	2.77	2.54	2.44
Pennsylvania	2.74	2.57	2.48