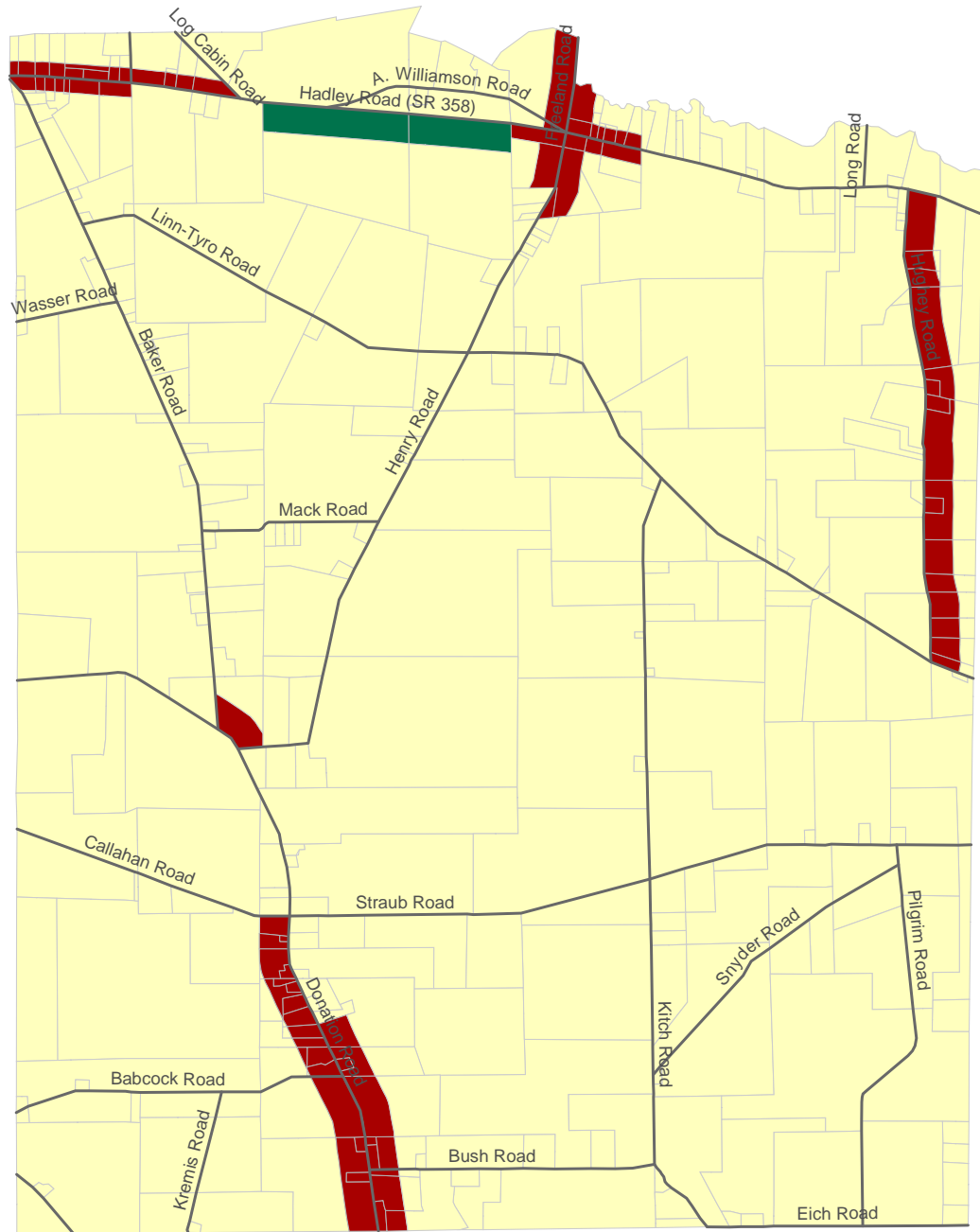
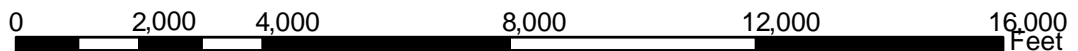


Otter Creek Township Zoning Map



Legend

- Roads
- ▭ Parcels
- ▭ R-1
- ▭ B-1
- ▭ I



Where a Zoning District does not follow a lot line, it is measured as:

- 250' off Hadley Road for any "B-1" district
- 500' off Hadley Road for any "I" district
- 400' off Henry/Freeland Road for any "B-1" district
- 500' off Donation & Hughey Roads for any "B-1" district

(all are measured from the road centerline)

Map created November 2005 by MCRPC.
For parcel zoning information, contact
the Township at (724) 588-3600.

