

JEFFERSON TOWNSHIP

<u>PNDI Rank</u>		<u>Legal Status</u>	
Global	State	Fed.	State

NATURAL HERITAGE AREAS:

SHENANGO LAKE BDA *Exceptional Significance*

Great Blue Heron (<i>Ardeas herodias</i>)	G5	S3S4B, S4N	
Cat-tail Sedge (<i>Carex typhina</i>)	G5	S2	PT
Osprey (<i>Pandion haliaetus</i>)	G5	S2B	PT
Fog-fruit (<i>Phyla lanceolata</i>)	G5	S2	PR
Special Animal 1	G5	S3	PC
Special Animal 2	G5	S1	PE
Special Animal 3	G4	S2B	PE
Special Animal 4	G5	S1S2	PE
Bottomland Oak-Hardwood Palustrine Forest		G5 S2	

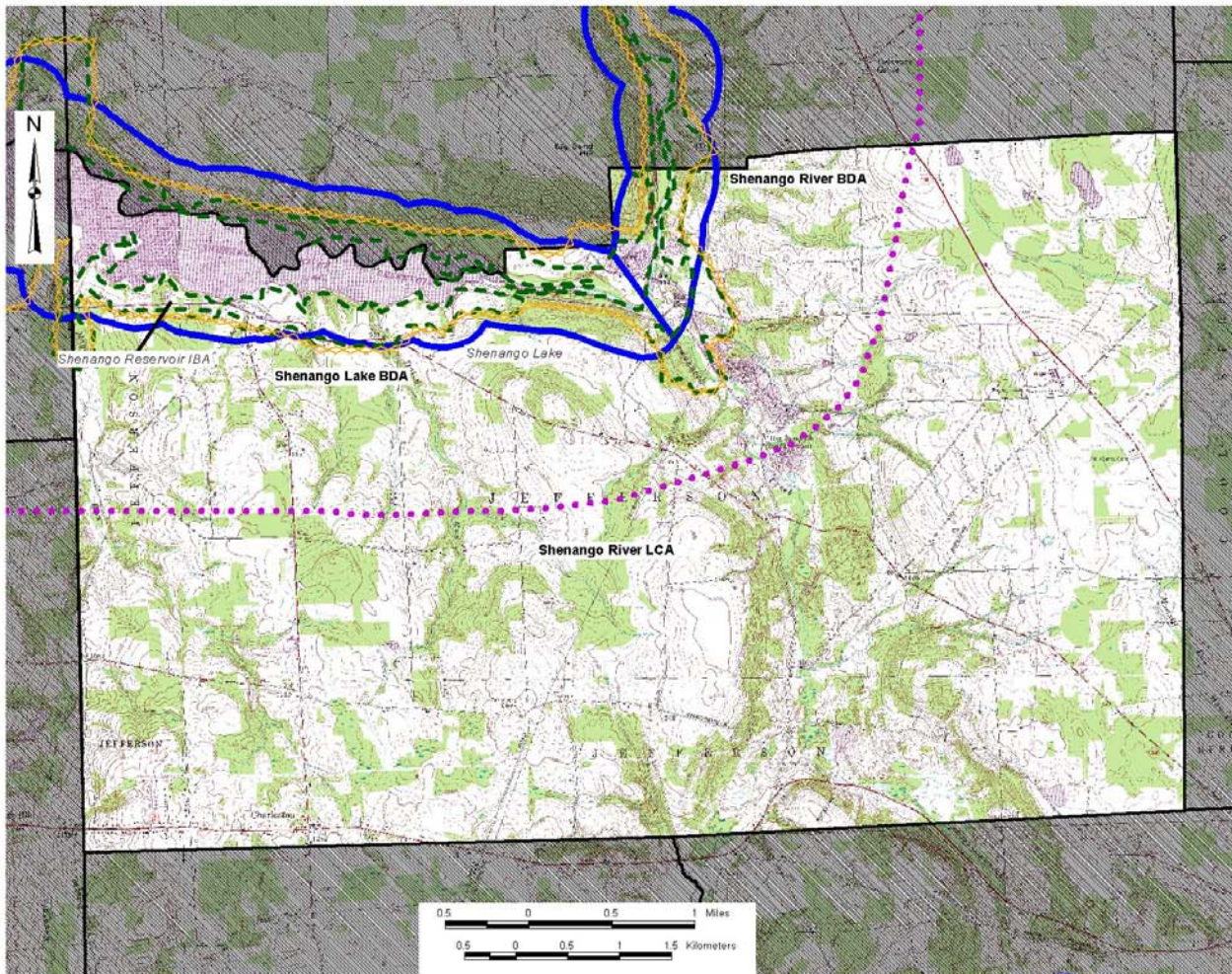
SHENANGO RIVER BDA *High Significance*

Fog-fruit (<i>Phyla lanceolata</i>)	G5	S2	TU
Special Animal 1	G5	S3	PC
Special Animal 2	G3	S1	PE
Special Animal 3	G3	S1	PE
Special Animal 4	G5	S3	PC
Special Animal 5	G5	S2S3	PE
Special Animal 6	G5	S1S2	PE
Special Animal 7	G4	S3	PC
Special Animal 8	G5	S2	PT
Special Animal 9	G4	S1	PE
Special Animal 10	G2	S1S2	PE
Special Animal 11	G3	S1	PE
Special Animal 12	G4	S1	PE
Special Animal 13	G5	S3	PC
Special Animal 14	G4	S2B	PE

SHENANGO RIVER LCA *Exceptional Significance*

MANAGED LANDS: Shenango Lake

Jefferson Township



Jefferson Township Mercer County Natural Heritage Inventory

Biological Diversity Areas:

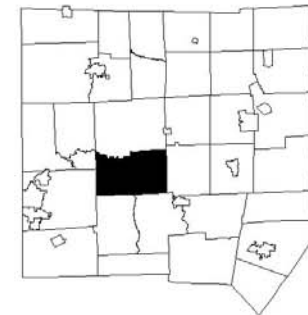
Shenango Lake
Shenango River

Landscape Conservation Areas:

Shenango River

Managed Areas:

Shenango Lake



Map Legend

-  Biological Diversity Area (BDA)
-  Landscape Conservation Area (LCA)
-  Audubon Society Important Bird Area (IBA)
-  Managed Area
-  Municipal Boundary

JEFFERSON TOWNSHIP

Jefferson Township is located in the center of Mercer County. The most prominent natural feature is Big Bend where the Shenango River sweeps a right angle as it turns from south to west. There are three Natural Heritage Areas and one managed land – **Shenango Lake** located in Jefferson Township.

Shenango Lake BDA

Shenango Lake BDA is discussed in Clark Borough.

Shenango River BDA

Shenango River BDA is discussed in Delaware Township.

Shenango River LCA

Shenango River LCA is discussed in Delaware Township