

GREENE TOWNSHIP AND JAMESTOWN BOROUGH

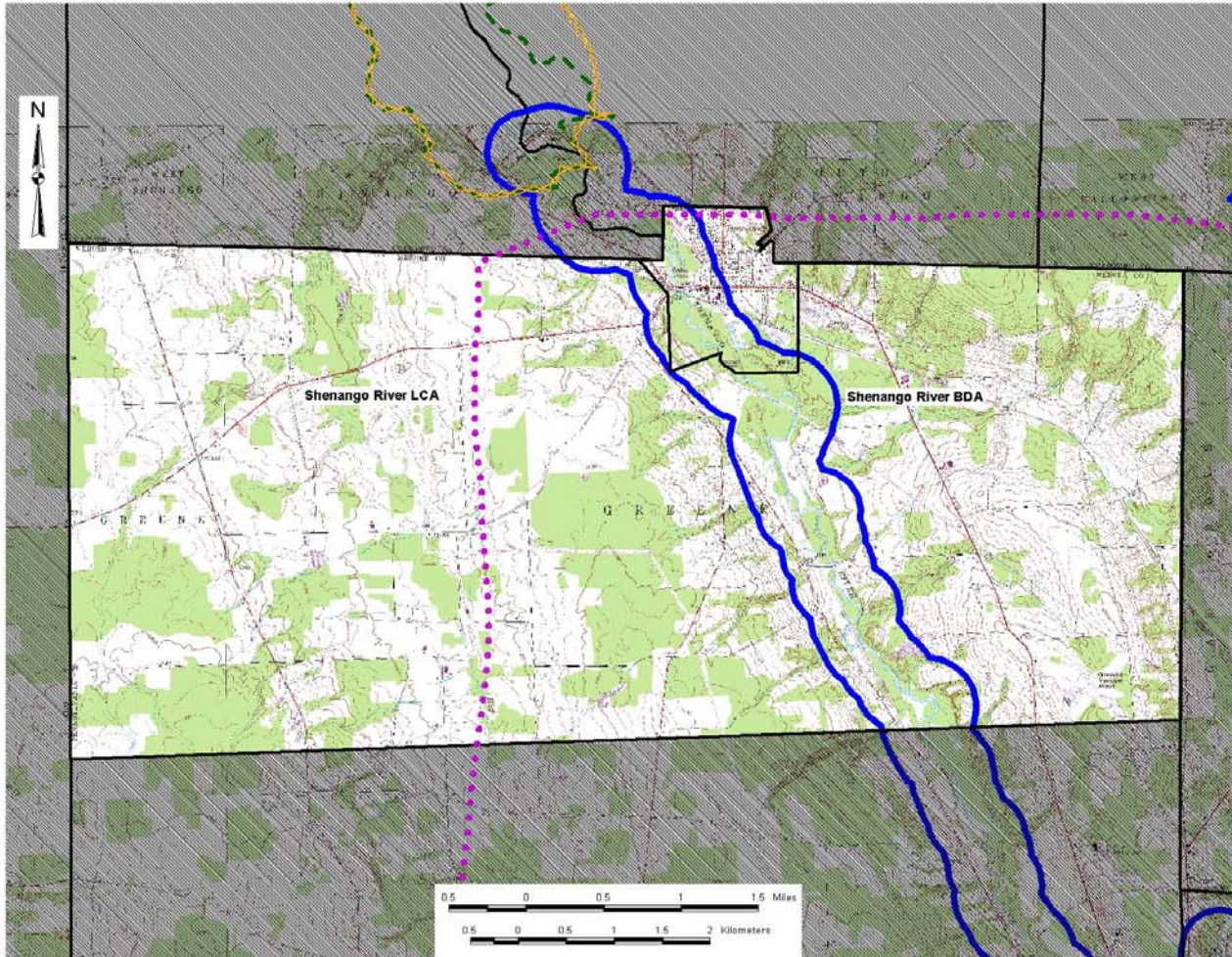
<u>PNDI Rank</u>		<u>Legal Status</u>	
Global	State	Fed.	State

NATURAL HERITAGE AREAS:

SHENANGO RIVER BDA	<i>Exceptional Significance</i>		
Fog-fruit (<i>Phyla lanceolata</i>)	G5	S2	TU
Special Animal 1	G5	S3	PC
Special Animal 2	G3	S1	PE
Special Animal 3	G3	S1	PE
Special Animal 4	G5	S3	PC
Special Animal 5	G5	S2S3	PE
Special Animal 6	G5	S1S2	PE
Special Animal 7	G4	S3	PC
Special Animal 8	G5	S2	PT
Special Animal 9	G4	S1	PE
Special Animal 10	G2	S1S2	PE
Special Animal 11	G3	S1	PE
Special Animal 12	G4	S1	PE
Special Animal 13	G5	S3	PC
Special Animal 14	G4	S2B	PE
SHENANGO RIVER LCA	<i>Exceptional Significance</i>		

MANAGED LANDS: None

Greene Township and Jamestown Borough



Greene Township and Jamestown Borough

Mercer County Natural Heritage Inventory

Biological Diversity Areas:

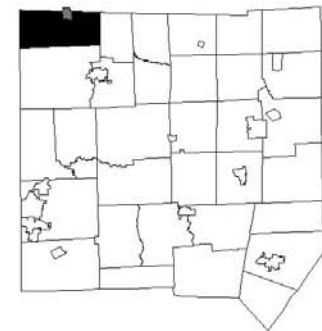
Shenango River

Landscape Conservation Areas:

Shenango River

Managed Areas:

None



Map Legend

-  Biological Diversity Area (BDA)
-  Landscape Conservation Area (LCA)
-  Audubon Society Important Bird Area (IBA)
-  Managed Area
-  Municipal Boundary

GREENE TOWNSHIP

Greene Township is located in the northwest corner of Mercer County on the relatively flat divide between the Shenango River and Pymatuning Creek. There are two Natural Heritage Areas and no managed lands located in Greene Township.

Shenango River BDA

Shenango River BDA is discussed in Delaware Township.

Shenango River LCA

Shenango River LCA is discussed in Delaware Township.

JAMESTOWN BOROUGH

Jamestown Borough is in northern Mercer County just south of the dam at Pymatuning Lake. The Shenango River, which flows south through the west side of the township, is the most notable natural feature within the borough. There are two Natural Heritage Areas and no managed lands located in Jamestown Borough.

Shenango River BDA

Shenango River BDA is discussed in Delaware Township.

Shenango River LCA

Shenango River LCA is discussed in Delaware Township.