



Mercer County Regional Planning Commission

*Mercer County  
Congestion Management Processes*

**PERFORMANCE MONITORING SUMMARY**

## **CMP Corridor #404**

*PA 518 / Longview Road & Stambaugh Avenue*

*(Hermitage to Sharon)*

Data Date: Fall / Winter 2009

## PERFORMANCE MONITORING SUMMARY FOR:

<b>CORRIDOR # 404</b>	<b>Data Date:</b>	<b>Fall / Winter 2009</b>
<b>PA 518</b> <i>(Longview Rd &amp; Stambaugh Ave)</i>	<b>Limits:</b>	PA 18 (City of Hermitage) to SR 3008 / E State St. (City of Sharon)
	<b>Length:</b>	3.2 Miles
	<b>Volume:</b>	Daily = 8,400-11,200 veh/day; Hourly = 920-1,010 veh/hr

### Applicable Type(s) of Congestion (✓)

✓	Commuter / Commercial Congestion		Non-recurring Incident Congestion
	Town Center / Main Street Congestion		Non-recurring Special Event Congestion
✓	School Congestion		Isolated Issues / Hot-Spots

### Performance Measures (per travel time data or field recon)

---	<b>PREVIOUS UPDATE</b> (none) Total Delay (veh-hr) and ( <i>County Rank</i> )	---	<b>PREVIOUS UPDATE</b> (none) Delay Rate (min / mi) and ( <i>County Rank</i> )
(n/a)		(n/a)	
<b>43</b>	<b>CURRENT UPDATE</b> (2009) Total Delay (veh-hr) and ( <i>County Rank</i> )	<b>1.0</b>	<b>CURRENT UPDATE</b> (2009) Delay Rate (min / mi) and ( <i>County Rank</i> )
(5)		(5)	
<b>8.3</b>	Travel Time (minutes)	<b>5.0</b>	Stops (#)
<b>3.2</b>	Delay (minutes)	<b>1.5</b>	Stop Rate (# / mi)
<b>39</b>	Delay Ratio (%)	<b>4</b>	Total Flagged Considerations (#)
<b>23</b>	Average Speed (mph)	<b>29</b>	Estimated Sidewalk Completion (%)

### Flagged Considerations (✓)

	National Highway System		Tourism / Recreation / Special Events
✓	Transit		Community Concerns / Quality of Life
	Pedestrian		Growth / Land Use / Economic Impacts
✓	Bicycle		Roadway Infrastructure (or related)
✓	Truck Freight	✓	Traffic Operations (or related)
	Rail Freight		Access / Access Control
	Incident Management		Safety or Crash Activity

### Adjacent Land Uses (% of corridor length based on segment-level occurrences)

<b>100%</b>	Residential	<b>84%</b>	Religious / Church / Cemetery
<b>90%</b>	Business / Commercial	<b>47%</b>	Health / Medical / Emergency Services
	Industrial / Manufacturing	<b>25%</b>	Government / Institutional
<b>25%</b>	Educational		Other:

*Context Description*

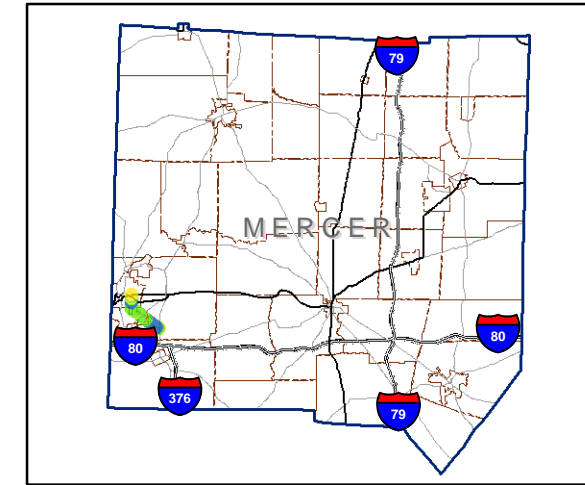
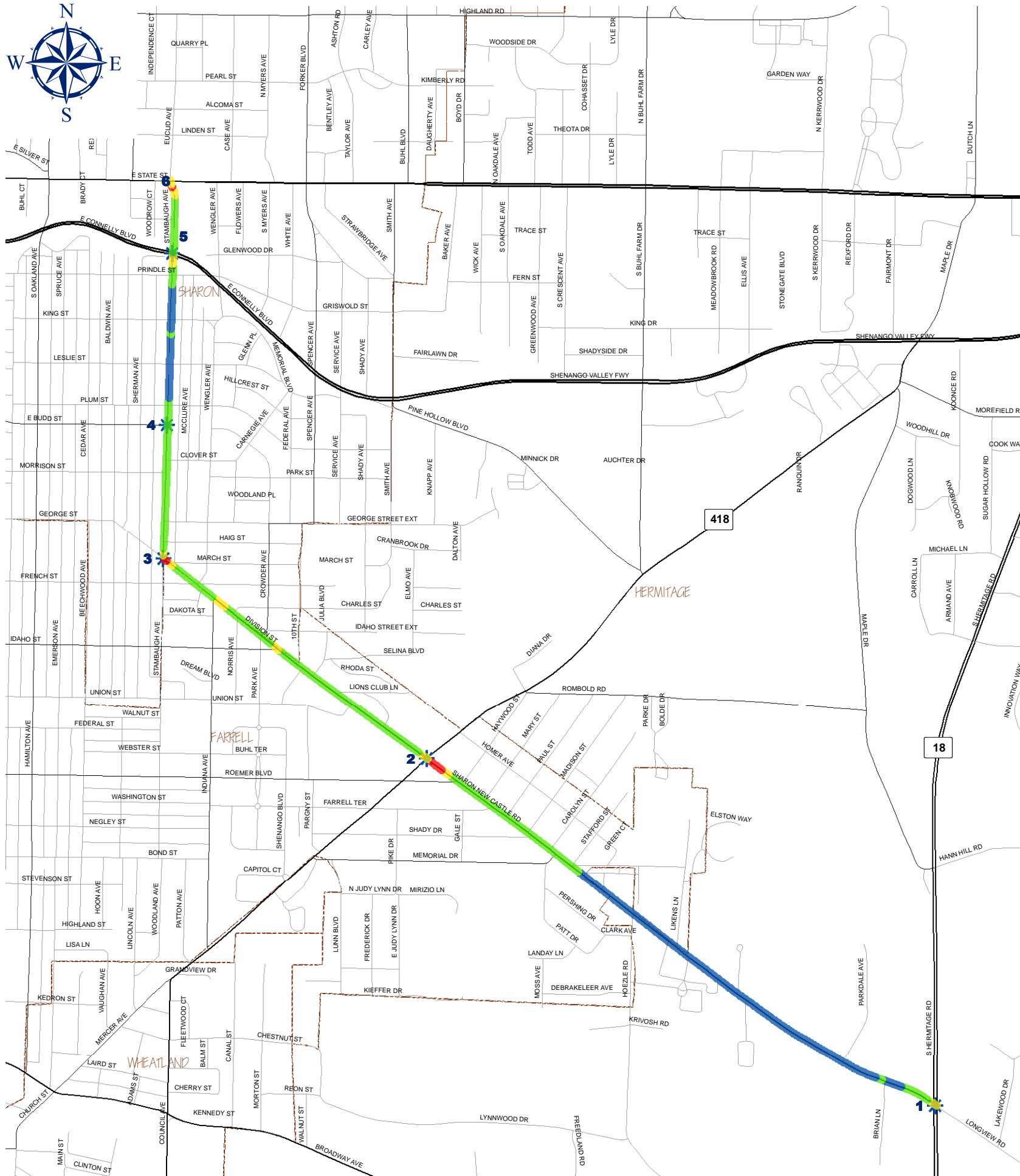
PA 518 is a 2-lane (1-lane in each direction) “community collector” mostly through a “town / village neighborhood” context or, closer to PA 18, a “suburban neighborhood” context. Typical posted speed limits are 35 mph, increasing to 45 mph near PA 18. Delays appear to be highest during an earlier weekday afternoon peak, likely with a tie to school traffic and other demand to/from East State Street or US 62.

*Other Highlights*

- Carries school traffic for Sharon and Farrell school districts.
- Access to hospitals and a US Army Reserve Center.
- Local bicycle route signing near Crowder Avenue (north of PA 418).
- Dense residential “feel” with on-street parking along Stambaugh Avenue.
- 10% upgrade heading north/west from PA 18 may delay heavy vehicles.
- Possible isolated hot-spots:
  - Signal delay at the north end of the corridor (East State Street or US 62).
  - Side-street delays with no turn-lanes at PA 18.

*Change Since Previous*

- No change – data contained herein represents baseline conditions for Fall/Winter 2009 as defined during the CMP’s initial corridor assessments.
- Strategy Potential – An initial “Wish List” of Congestion Management Strategies has yet to be determined for this corridor.



Detail 1 - County Location (N.T.S.)

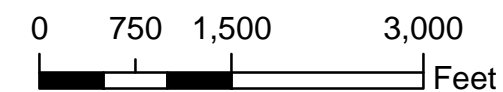
### LEGEND

#### Speed-Based Congestion Estimate

- Slowed / Stopped (Significant Congestion)
- Slowed (Moderate Congestion)
- Free-Flowing (Minimal Congestion)
- Free-Flowing (No Congestion)

#### Corridor Nodes, PA 518 @:

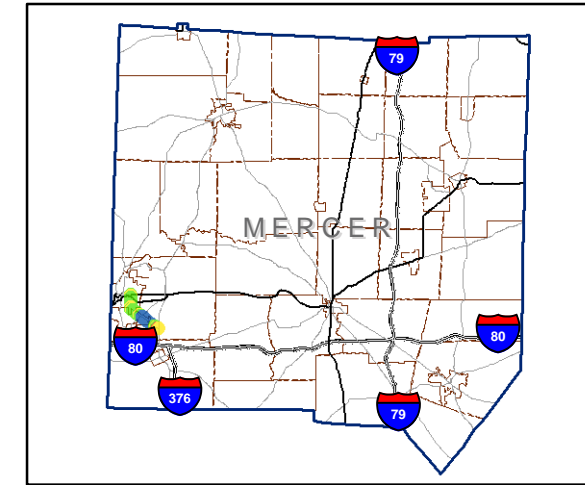
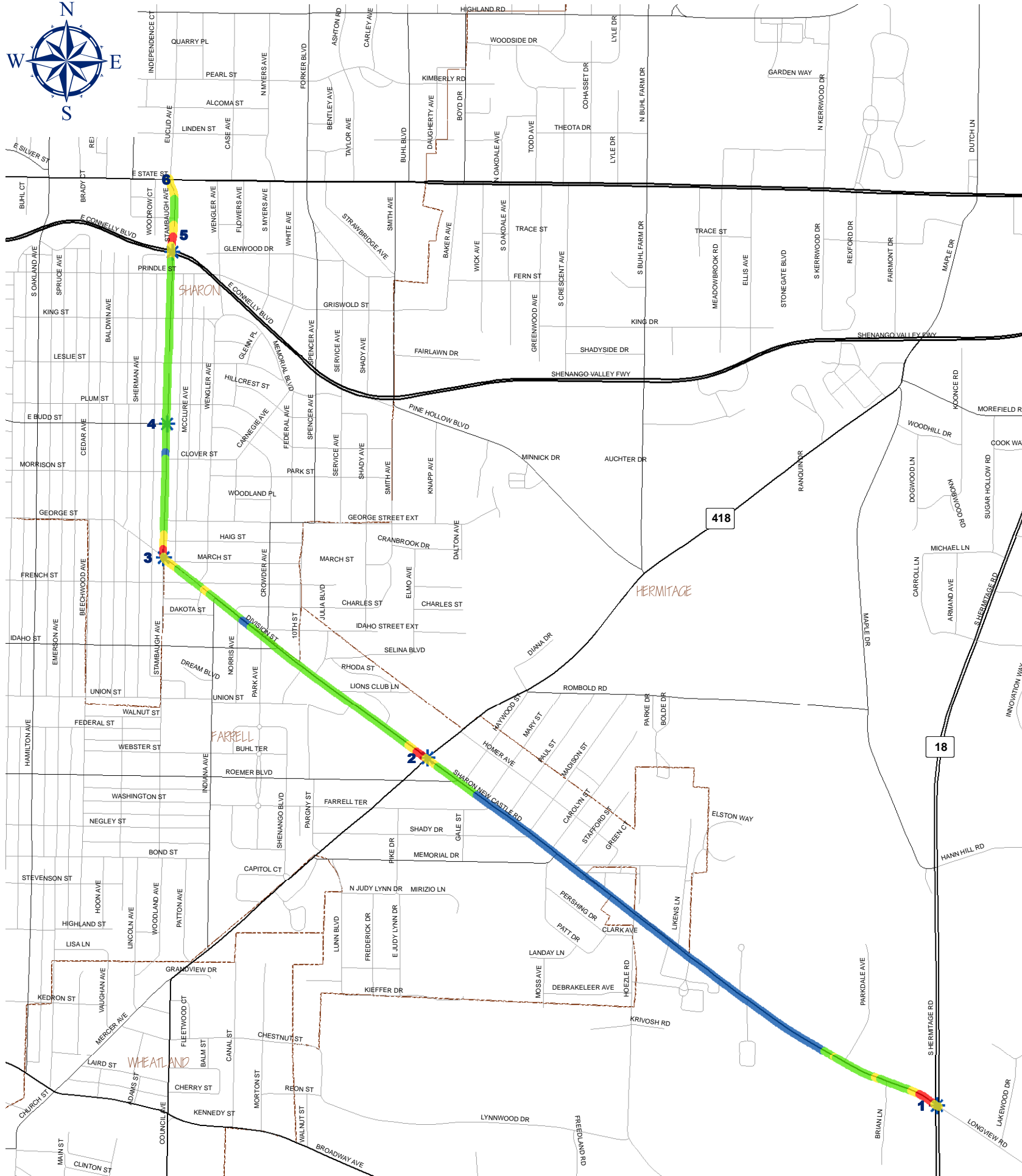
- ✱ 6, E State St (SR 3008), Euclid Ave
- ✱ 5, US 62, E Connelly Blvd
- ✱ 4, E Budd St
- ✱ 3, Stambaugh Ave, Division St
- ✱ 2, PA 418, Mercer Ave
- ✱ 1, PA 18, S Hermitage Rd



## Mercer County CMP

### PA 518 (Longview Rd / Stambaugh Ave)

Speed Display Diagram for  
Typical Weekday PM Peak (NB)



Detail 1 - County Location (N.T.S.)

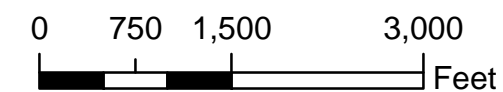
### LEGEND

#### Speed-Based Congestion Estimate

- Slowed / Stopped (Significant Congestion)
- Slowed (Moderate Congestion)
- Free-Flowing (Minimal Congestion)
- Free-Flowing (No Congestion)

#### Corridor Nodes, PA 518 @:

- ✱ 6, E State St (SR 3008), Euclid Ave
- ✱ 5, US 62, E Connelly Blvd
- ✱ 4, E Budd St
- ✱ 3, Stambaugh Ave, Division St
- ✱ 2, PA 418, Mercer Ave
- ✱ 1, PA 18, S Hermitage Rd



## Mercer County CMP

### PA 518 (Longview Rd / Stambaugh Ave)

Speed Display Diagram for  
Typical Weekday PM Peak (SB)